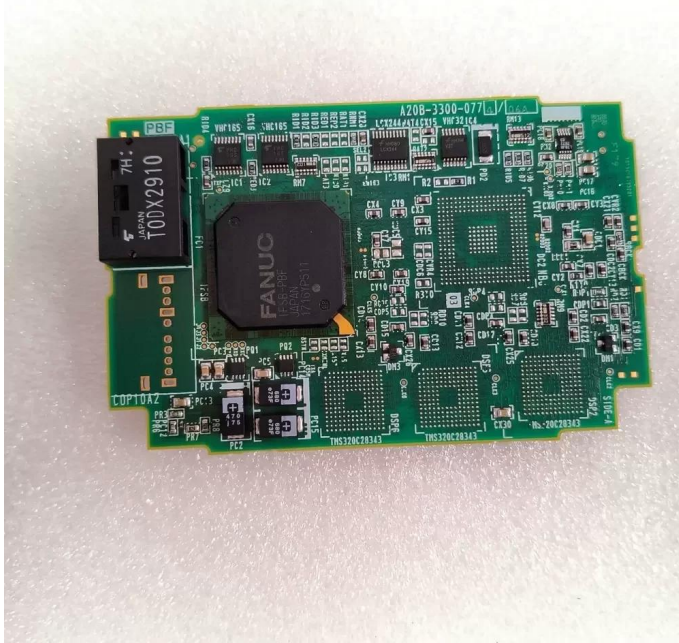


A20B-3300-0774 Fanuc 6Axis R-30iB Servo Control Axis Card Datasheet



Brand: Fanuc

SKU: 1046108733764

Category: CNC, Robotics & PLC Boards

Price: **\$1,528.57**

E-mail: sales@equipspares.com

Web: <https://www.equipspares.com>

Product Page:

<https://www.equipspares.com/product/a20b-3300-0774-fanuc-6axis-r-30ib-servo-control-axis-card>

Product Description

Fanuc A20B-3300-0774 is a 6 axis servo control module featuring a horizontal PCB mounting interface and integrated A11 logic for R-30iB series controllers. The hardware utilizes a multi-layer PCB construction with high-density surface-mount components, incorporating dedicated Fanuc ASICs for real-time motion control and feedback processing. It connects via a high-speed serial bus for servo drive synchronization and includes gold-plated edge connectors to ensure signal integrity. The board is designed for direct installation onto the main control board of the robotic system.

A20B-3300-0774 Specifications

Model: A20B-3300-0774

Brand: Fanuc

Category: Servo Control Axis Card

Module Type: Servo Module A11

Axis Capacity: 6 axis

Controller Compatibility: R-30iB, R-30iB Mate

Alternative Part Numbers: A05B-2600-H040, A20B-3300-0664

Mounting Orientation: Horizontal to Main Board

Origin: Japan

Weight: 0.07 kg

Operating Temperature: 0 to 55 °C

Storage Temperature: -20 to 75 °C

Humidity: 10 to 90 % (Non-condensing)

Interface: High-speed serial bus

PCB Construction: Multi-layer with surface-mount components

A20B-3300-0774 Applications

Primary applications include integration into Fanuc R-30iB robot control cabinets for multi-axis articulated robotic arms and automated assembly systems. Deployed within high-precision CNC machining centers and industrial automation cells requiring synchronized 6 axis motion control.

Supplemental Images

